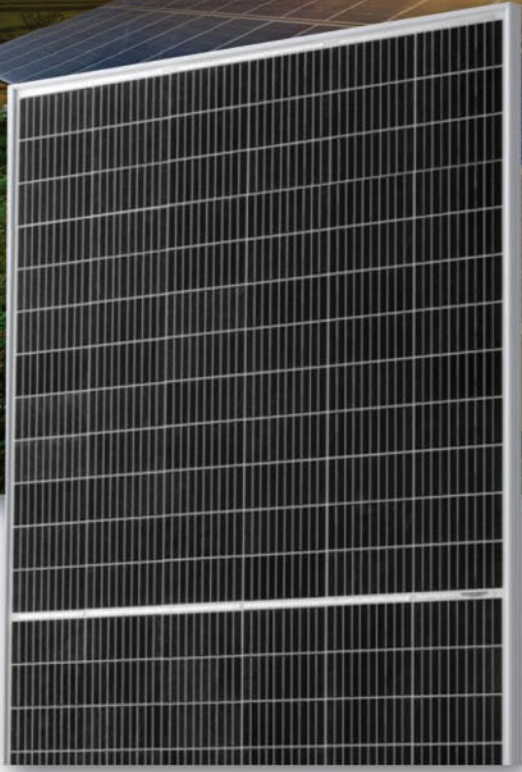


PIKCELL GROUP MONO MODULE PiK420M(144)-9BB

Best in class quality PiKCELL Group production line is fully automated and include multiple quality checks throughout the production process including Cell Testing, 100% Visual Mirror Inspection, EL Testing and PV Sun Simulator Testing



0 to +5W

0 to +5W positive tolerance
Detailed information in Electrical Specifications



High conversion efficiency
High module efficiency to guarantee power output.



Self-cleaning glass
Coating glass for self-cleaning, reduce surface dust.



Outstanding low irradiation performance
Excellent module efficiency even in the weak light conditions, such as morning or cloudy.



Excellent loading capability
2400Pa wind loads, 5400Pa snow loads.

48

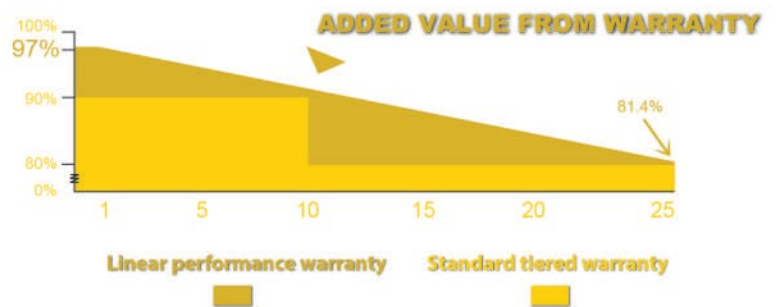
48-hour responsive service

10

10-year warranty on materials and workmanship

25

25-year performance warranty



ELECTRICAL DATA

| | |
|------------------------------------|----------|
| Model Type | PiK 420 |
| Peak Power (Pmax)/W | 420 |
| Module Efficiency/% | 20.9 |
| Maximum Power Voltage (Vmp)/V | 40.80 |
| Maximum Power Current (Imp)/A | 10.30 |
| Open Circuit Voltage (Voc)/V | 49.10 |
| Short Circuit Current (Isc)/A | 10.90 |
| Power Tolerance | 0 to +5W |
| Maximum System Voltage | 1500V |
| Nominal Operating Cell Temperature | 44.4±2°C |
| Maximum Series Fuse Rating | 5A |

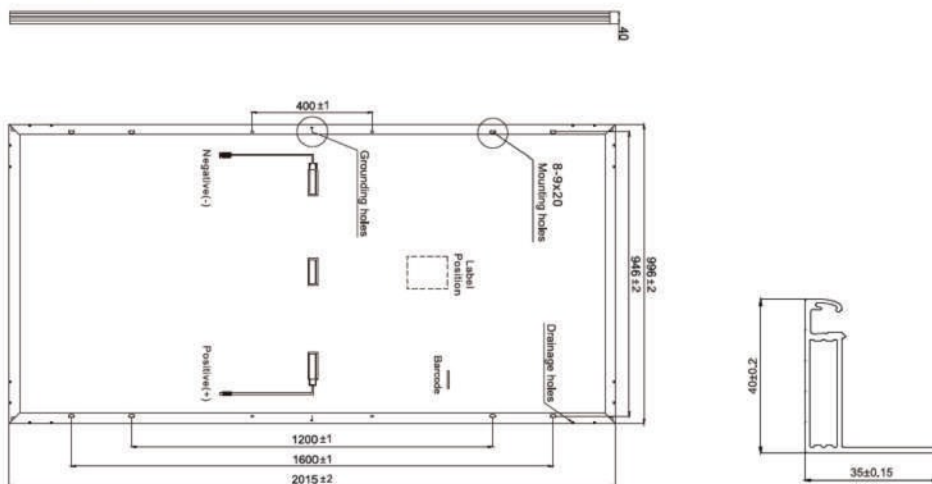
MECHANICAL DATA

| | |
|-----------------|-----------------------|
| Cell Type | Monocrystalline, 9BB |
| Number of Cells | 144 cells (6x12+6x12) |
| Weight | 23kg |
| Dimension | 2015x996x40mm |
| Max Load | 5400 Pascals |
| Junction Box | IP68 rated |
| Connector | Twinsel PV-SY02, IP68 |
| Wire Type | Compatible PV Wire |

TEMPERATURE CHARACTERISTICS

| | |
|--------------------------------|------------|
| Temp. Coeff. of Isc (TK Isc) | 0.04% /°C |
| Temp. Coeff. of Voc (TK Voc) | -0.28% /°C |
| Temp. Coeff. of Pmax (TK Pmax) | -0.37% /°C |

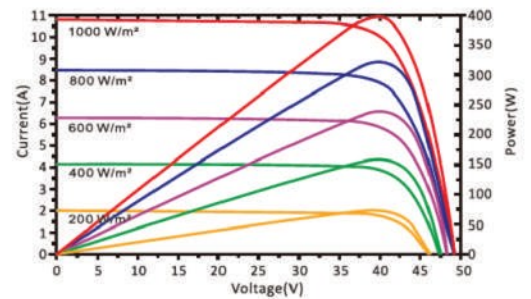
PHYSICAL CHARACTERISTICS



PACKING MANNER

| | |
|----------------------|--------|
| Container | 40' HQ |
| Pieces per Pallet | 26 |
| Pieces per Container | 660 |

ELECTRICAL CHARACTERISTICS



I-V characteristics at different temperatures

