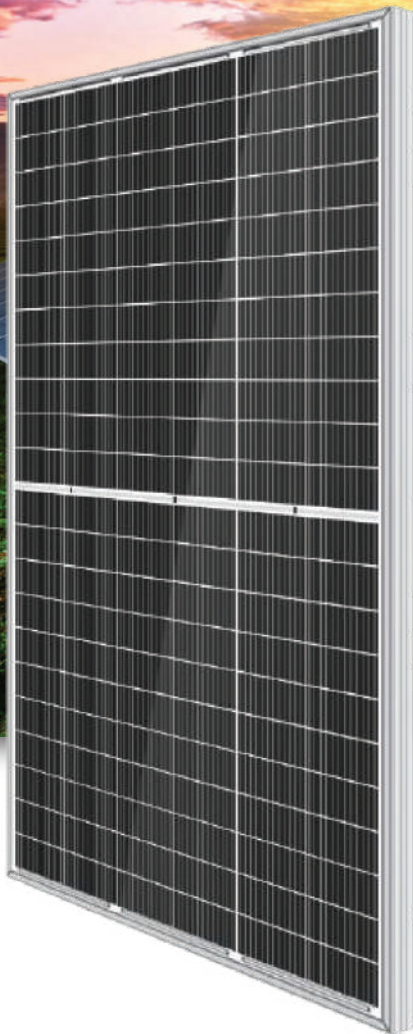


PIKCELL GROUP Halfcut 210mm MONO MODULE PiK210*210-M-66- (650-665)M

Best in class quality PIKCELL Group production line is fully automated and includes multiple quality checks throughout the production process including Cell Testing, 100% Visual Mirror Inspection, EL Testing and PV Sun Simulator Testing



0 to +5W

0 to +5W positive tolerance
Detailed information in Electrical Specifications



High conversion efficiency
High module efficiency to guarantee power output.

48

48-hour responsive service



Self-cleaning glass
Coating glass for self-cleaning, reduce surface dust.

10

10-year warranty on materials and workmanship

25

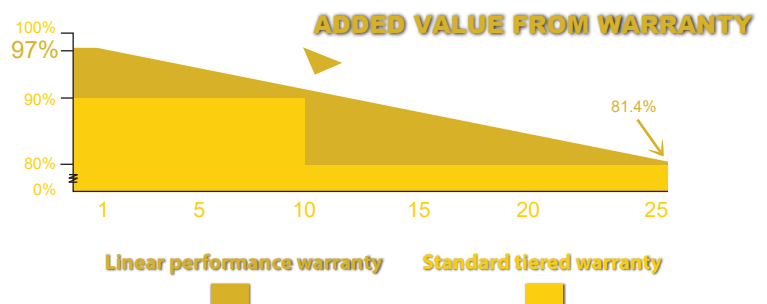
25-year performance warranty



Outstanding low irradiation performance
Excellent module efficiency even in the weak light conditions, such as morning or cloudy.



Excellent loading capability
2400Pa wind loads, 5400Pa snow loads.



ELECTRICAL DATA

Model Type	PiK210*210-M-66-MH-	650	655	660	665
Peak Power (Pmax)/W		650W	655W	660W	665W
Module Efficiency/%		20.92%	21.09%	21.25%	21.41%
Maximum Power Voltage (Vmp)/V		37.61V	37.81V	38.01V	38.21V
Maximum Power Current (Imp)/A		17.28A	17.32A	17.36A	17.40A
Open Circuit Voltage (Voc)/V		45.58V	48.78V	45.98V	46.18V
Short Circuit Current (Isc)/A		18.16A	18.21A	18.26A	18.31A
Power Tolerance		0 to +5W	0 to +5W	0 to +5W	0 to +5W
Maximum System Voltage		1000/1500V	1000/1500V	1000/1500V	1000/1500V
Nominal Operating Cell Temperature		41±3°C	41±3°C	41±3°C	41±3°C
Maximum Series Fuse Rating		30A	30A	30A	30A

MECHANICAL DATA

Cell Type	210mm, Mono
Number of Cells	132 (11 × 6 × 2)
Weight	34kg
Dimension	2384x1303x35mm
Max Load	5400 Pascals
Junction Box	IP68 rated
Connector	MC4 Compatible
Wire Type	PV Wire

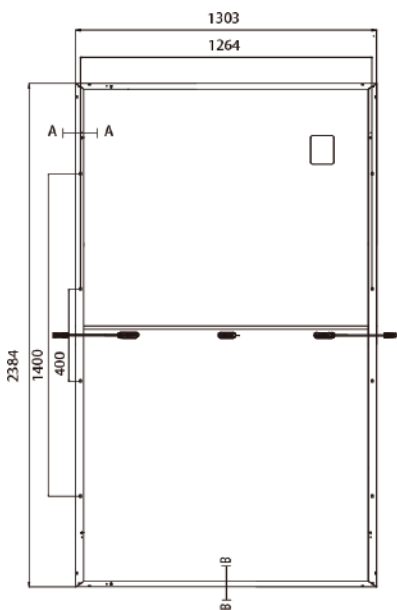
TEMPERATURE CHARACTERISTICS

Temp. Coeff. of Isc (TK Isc)	0.05% /°C
Temp. Coeff. of Voc (TK Voc)	-0.28% /°C
Temp. Coeff. of Pmax (TK Pmax)	-0.36% /°C

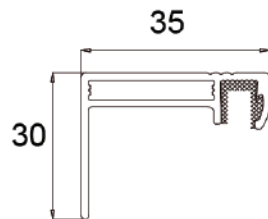
PACKING MANNER

Container	40' HQ
Pieces per Pallet	31
Pieces per Container	558

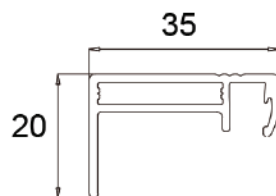
PHYSICAL CHARACTERISTICS



Frame Cross Section A-A



Frame Cross Section B-B



ELECTRICAL CHARACTERISTICS

